



# Wildog Accessories

## *Installation instruction*

### **PRODUCT DESCRIPTION:**

- Toyota Hilux 2011-2015 Front



### PRODUCT SAFETY & LEGAL DISCLAIMER

**• IMPORTANT READ ALL INSTRUCTIONS CAREFULLY BEFORE INSTALLING. FAILURE TO DO SO MAY CAUSE PERSONAL INJURY OR DAMAGE TO PRODUCT AND/OR PROPERTY.**

- Review the product package and contents prior to beginning the installation.

**Take care when opening the packaging and removing items. If a return is needed you will want to return the product in its original packaging if possible.**

- This instruction guide is provided as a GENERAL installation guide, some vehicles vary dimensionally and may require additional steps.
- Test fit the product on the vehicle prior to any third-party modifications and or finishing. The manufacturer and/or distributors do not accept responsibility for third party charges, labour and or third part replacement modifications. Some modifications may void the factory warranty.
- Exercise due diligence when installing this product. The manufacturer and distributors of this product do not accept any responsibility for vehicle damage or personal injury resulting from the installation of this product. Careless installation and operation can result in serious injury or equipment damage.
- This product is for general off-road use. All liability for installation and use rests with the owner/operator.

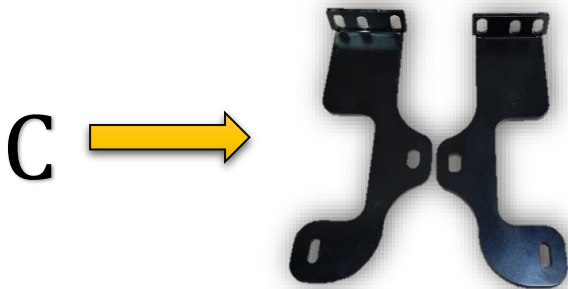


# Wildog Accessories

## Installation instruction

### PARTS INCLUDED IN THE LIST:

A	Complete & assembled bumper	1
B	Winch plate	1
C	Chassis Stiffeners	2
D	Radiator plate	1
E	M8 x 30 Hex Bolts	2
F	M8 x 25 Washers	2
G	M10 x 40 x 1.5 Hex Bolts	2
H	M10 x 25 x 3 washers	4
I	M10 Nyloc Nuts	2
J	M12 x 40 x 1.25 Hex Bolts	2
K	M12 x 40 x 1.75 Hex Bolts	10
L	M12 x 30 x 3 Washers	22
M	M12 Nyloc Nuts	10
N	Sets of light with connectors	2





# Wildog Accessories

*Installation instruction*

E →



J →



F →



K →



G →



L →



H →



M →



I →



N →





# Wildog Accessories

## Installation instruction

Please insure that all parts and fasteners are accounted for before starting the fitment, if any parts are not included please give us a call on [065 100 62525](tel:06510062525) or [074 227 1524](tel:0742271524) and we will gladly assist you.

ESTIMATED TIME FOR INSTALLATION:

3-4 hours

*Please follow the necessary steps to complete your fitment.*

BEFORE



AFTER



### STEP 1

Remove the following from the vehicle:

- Plastic bumper
- Standard grill.





# Wildog Accessories

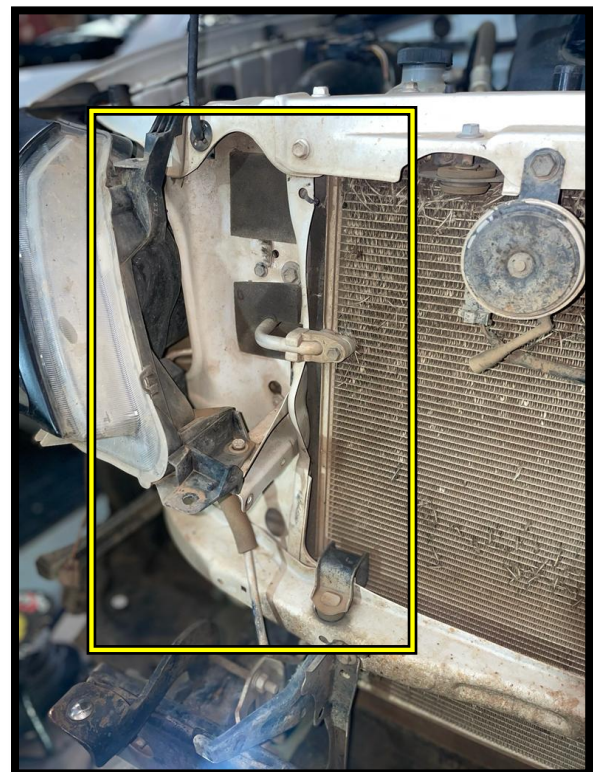
## *Installation instruction*

### STEP 2

- When your standard bumper is removed, remove the headlight washer pipe from the bumper, fold it to blank of and tighten with a cable tie.



- Remove the air Ducting plastics on both sides of the vehicle.



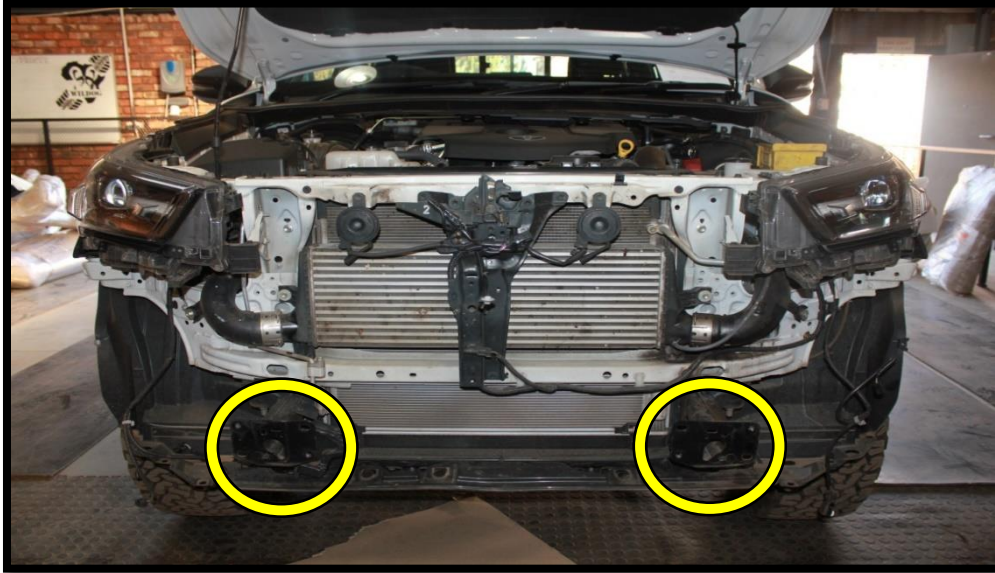


# Wildog Accessories

## Installation instruction

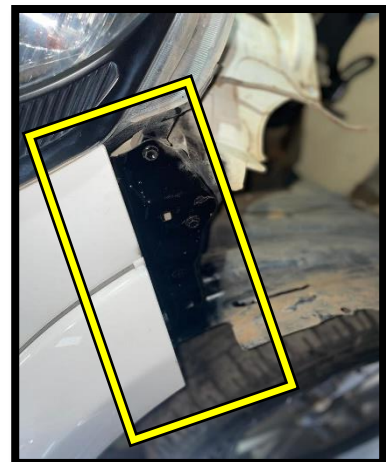
### STEP 3

- Remove the standard chassis stiffener.



### STEP 4

- Remove the indicated bumper brackets next to the head lights just below the fenders on both sides of the vehicle.
- When removing the bumper brackets as shown above, tape off all edges with masking tape.
- Add the top bolt back to the body and fasten tightly to secure headlight on required position .
- Clean the surface with spirits before spraying.
- Spray the area marked with black spray paint.
- Remove the masking tape after spraying.



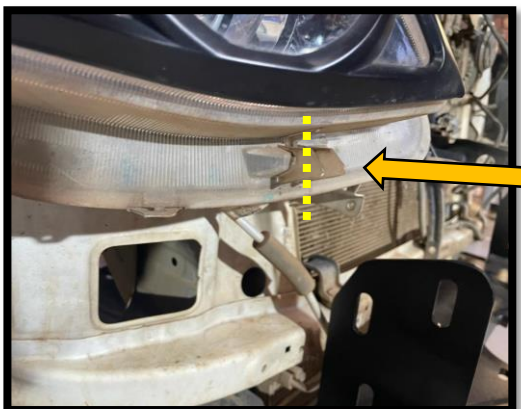


# Wildog Accessories

## *Installation instruction*

### STEP 5

- There are brackets below the head lights that needs to be cut until it no longer causes an obstruction to the fitment of the bumper as shown on the photos below.



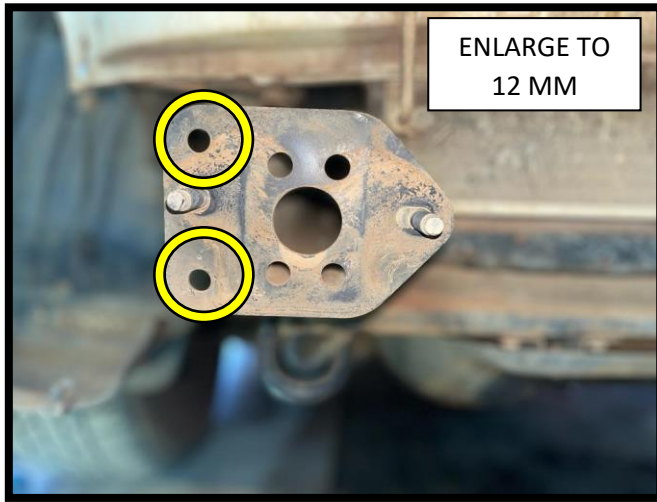


# Wildog Accessories

## Installation instruction

### STEP 6

- The holes indicated on the chassis flange should be enlarged to 12mm.
- All drilled or cut parts should be coated to prevent corrosion.



### STEP 7

- Remove the brackets on the side of your chassis flange as shown below.



- Lightly tighten the winch plate and stiffeners supplied to the side and the front of the chassis.







# Wildog Accessories

## *Installation instruction*

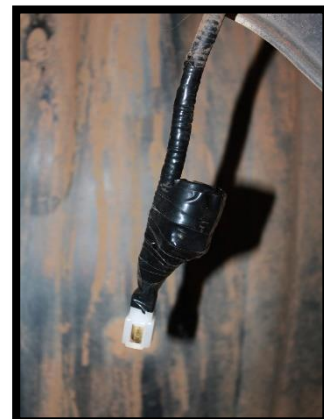
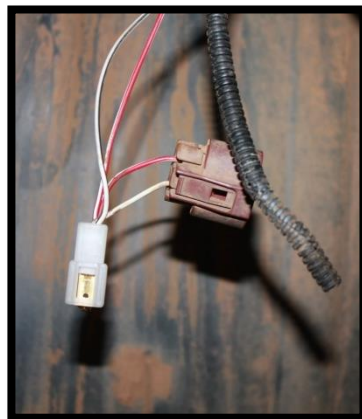
### STEP 8

- Ensure that the winch plate's vertical brackets are in alignment and centred with the vehicles chassis before tightening all fasteners.



### STEP 9

- Do not cut any wires, or remove the standard OEM light plugs.
- Strip back to small pieces of insulation from the wire and attach the female lugs to the harness.
- Cover and tidy all open wires and loose parts.
- Connect the male lugs to the supplied fogg light and connect to the wiring harness plugs.
- Connect the fog lights to the harness.





# Wildog Accessories

## *Installation instruction*

### STEP 10

- Torque the chassis mount fasteners to (95 NM).
- Spray and mark each fastener afterwards with a paint marker.
- Ensure that the bumper is not pinching the lights or the fenders when fastening all bolts.
- When the Bumper is aligned drill two (M10) holes for the locking bolts and fasten properly.
- Fasten locking bolts and mark them with a paint marker.



### STEP 11

- Cut the inner fender liners evenly with the bumper, and tuck them in neatly behind the bumper.
- Secure liner from the inside with cable ties to secure them in place.





# Wildog Accessories

## *Installation instruction*

- Fasten the supplied radiator plate to the bottom of the vehicle.



- Please ensure that all parts and fasteners are fitted and tightened before letting the vehicle leave your premises.
- Retention all fasteners after 3 months or 500KM of installation to ensure all parts are still fastened and safe for the client.

**Here is too many safe adventures.**



# Wildog Accessories

## Installation instruction

A Warranty form is included with all Wildog Accessories orders placed, please insure that it is completed with every fitment and retention of the bumper if there is no Warranty form completed your 1 year Warranty on the bumper will be voided.



**Wildog Accessories (Pty) Ltd**

www.wildog.co.za  
sales@wildog.co.za  
17 Akwamaryn Street  
Klerksoord Pretoria

**Contact numbers:**  
0651006252  
0742271524

Jobcard

Fitment Centre Reference:

Date:

### INSTALLATION AND WARRANTY FORM

#### CUSTOMER DETAIL

Customer Name \_\_\_\_\_  
Address \_\_\_\_\_  
Telephone No \_\_\_\_\_ Cell Number \_\_\_\_\_ Postal Code \_\_\_\_\_  
E Mail Address \_\_\_\_\_

#### DISTRIBUTOR / FITMENT CENTRE DETAIL

Company Name \_\_\_\_\_  
Address \_\_\_\_\_ Contact Person \_\_\_\_\_  
Telephone No \_\_\_\_\_ Technician Name \_\_\_\_\_

#### VEHICLE DETAIL

Vehicle Make \_\_\_\_\_ Model \_\_\_\_\_ Year \_\_\_\_\_  
Registration No \_\_\_\_\_ VIN Number \_\_\_\_\_  
Odo/Speedo Reading \_\_\_\_\_

#### ACCESSORIES FRONT

Bumper	Yes	No
Winch	Yes	No
PDC's	Yes	No
Radar box	Yes	No
Bolt on towbar	Yes	No
Other	_____	

Surface coating \_\_\_\_\_

#### ACCESSORIES REAR

Bumper	Yes	No	
Spare wheel carrier	None	Single	Dual
PDC's	Yes	No	
Towball	Yes	No	
Wiring harness	Yes	No	
Other	_____		

Surface coating \_\_\_\_\_

#### ACCESSORIES

Bash plate	Yes	No
Lower c/arms	Yes	No
Transfer c/p	Yes	No
Rock Sliders	Yes	No
Roof rack	Yes	No
Other	_____	

#### INSTALLATION DETAIL

Torque checks	_____	NW	_____
Lock bolts	_____	NW	_____
Rubbers	_____		
Led lights	_____		

#### RE-CHECK DETAIL

Torque checks	_____
Lock bolts	_____
Rubbers	_____
Led lights	_____

#### COMPONENTS FITTED

<b>Front</b>	Winch plate	Yes	No	
	Stiffeners	Yes	No	
	Bumper Shell			
	Radiator plate	Yes	No	
	Lights	Yes	No	
	Resistors	Yes	No	
	Other	_____		
	Serial #	_____		
	<b>Rear</b>	Spine	Yes	No
		Shell	Yes	No
Resistors		Yes	No	
Recovery points		Yes	No	
Bumper step		Yes	No	
Lights		Yes	No	
Towball		Yes	No	
Trailer plug		Yes	No	
Other		_____		
Serial #		_____		

Fitment Centre \_\_\_\_\_  
Technician Name \_\_\_\_\_

Signature : Fitment Centre (At Re-Check)

#### CUSTOMER DECLARATION

#### OTHER

Signature : Customer (At Re-Check)

Signature : Customer (At Fitment)

Signature : Fitment Centre (At Fitment)

**Copy 1** - Customer copy after 500km Re-check  
**Copy 2** - Customers Copy at Installation  
**Copy 3** - To be returned to Wildog Acc  
**Copy 4** - Remain in book for Fitment Centre Records

It is essential to complete this card in full. Return to Wildog accessories via email to validate this warranty. No warranty form, no claim. Warranty will be void if retention is not done